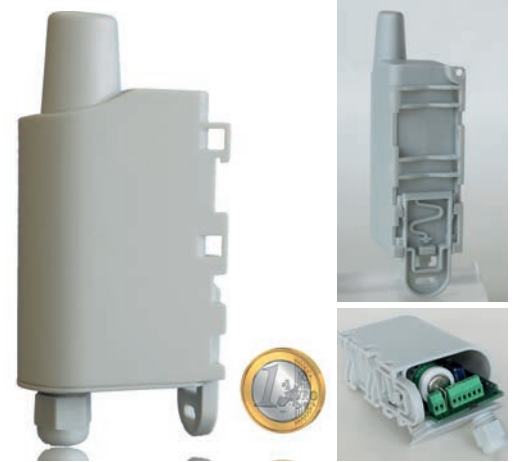


# LoRaWAN Pulse Transceiver

## Highlights

- Radio transmission of meter data through LoRaWAN compliant networks
- Water, gaz, electricity & heat meters
- Up to two meters per transmitter
- Range up to 10km
- Up to 10 years of autonomy
- IP67 enclosure



**LoRa Alliance**

The **LoRaWAN Pulse** from Adeunis RF is a ready-to-use **radio transceiver** allowing to **transmit data from water, gas, electricity & heat meters**.

The **LoRaWAN Pulse** provides connection to any operated network using the LoRaWAN protocol.

**Two meters can be supported** by a single **LoRaWAN Pulse** transmitter allowing a significant **reduction of costs** of implementation and deployment.

The configuration of the transmitter can be done **via the network** allowing the choice of **periodicity, pulse weight** or **data encryption**.

Powered through a Lithium battery, it allows an autonomy guaranteed up to **10 years**.

## Performances

RF power: 14dBm (25mW)  
RF sensitivity: up to -140dBm  
Range: up to 10km

## Firmware

LoRaWAN V1 network protocol  
Transmission cycles: 10mn, 1h, 12h or defined by network  
History of data  
Data encryption: AES128

## Warnings

Battery end of life

## Consumption & needs

Operating voltage: 3.6V nominal  
Power supply: through Li-SOCI2 battery  
Lifespan: up to 10 years

## Compatibility

Water, Gas, Electricity and Heat meters

## General information

Operating temperature: -20°C / +75°C  
Integrated fixation systems: DIN-Rail, tube, wall, necklace  
Dimensions: 105 x 50 x 27 mm  
Weight: 80gr  
Housing: IP67 (IP68 on demand)  
Standards: EN 300-220, EN 301-489, EN 60950

## References

- **ARF8046PA** LoRaWAN PULSE

Distributed by:



## ADEUNIS RF

283 rue Louis Néel - Parc Technologique Pré Roux  
38920 CROLLES - France  
Tel.: +33 (0)4 76 92 07 77 - Fax: +33 (0)4 76 04 80 87  
www.adeunis-rf.com - arf@adeunis-rf.com

## The Netherlands



Elektrostraat 17  
NL-7483 PG Haaksbergen

T: +31 (0)53 573 33 33  
F: +31 (0)53 573 33 30  
E: [nl@texim-europe.com](mailto:nl@texim-europe.com)

## Belgium



Zuiderlaan 14 bus 10  
B-1731 Zellik

T: +32 (0)2 462 01 00  
F: +32 (0)2 462 01 25  
E: [belgium@texim-europe.com](mailto:belgium@texim-europe.com)

## UK & Ireland



St. Mary's House, Church Lane  
Carlton Le Moorland  
Lincoln LN5 9HS

T: +44 (0)1522 789 555  
F: +44 (0)845 299 22 26  
E: [uk@texim-europe.com](mailto:uk@texim-europe.com)

## Germany North



Bahnhofstrasse 92  
D-25451 Quickborn

T: +49 (0)4106 627 07-0  
F: +49 (0)4106 627 07-20  
E: [germany@texim-europe.com](mailto:germany@texim-europe.com)

## Germany South



Martin-Kollar-Strasse 9  
D-81829 München

T: +49 (0)89 436 086-0  
F: +49 (0)89 436 086-19  
E: [germany@texim-europe.com](mailto:germany@texim-europe.com)

## Austria



Warwitzstrasse 9  
A-5020 Salzburg

T: +43 (0)662 216 026  
F: +43 (0)662 216 026-66  
E: [austria@texim-europe.com](mailto:austria@texim-europe.com)

## Nordic region



Sdr. Jagtvej 12  
DK-2970 Hørsholm

T: +45 88 20 26 30  
F: +45 88 20 26 39  
E: [nordic@texim-europe.com](mailto:nordic@texim-europe.com)

## General information



[info@texim-europe.com](mailto:info@texim-europe.com)  
[www.texim-europe.com](http://www.texim-europe.com)